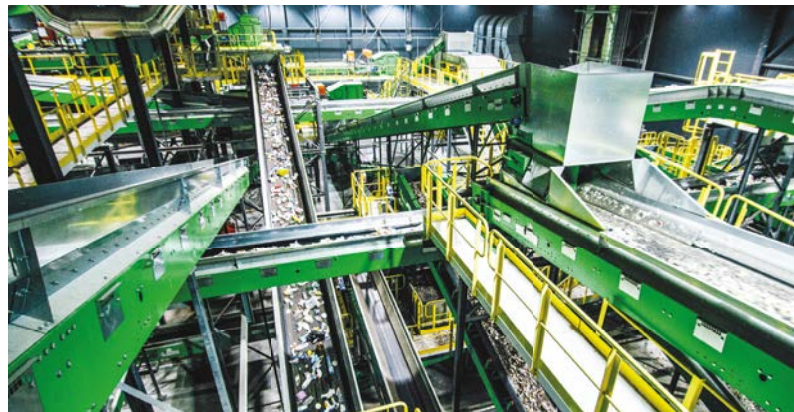


OUR REFERENCES

STATUS OCTOBER 2023



ALL FROM ONE COMPANY – FROM THE DESIGN TO COMMISSIONING

Some references

1. Mechanical-biological waste treatment (MBT) 3	3
plus Municipal solid waste (MSW) treatment	
2. Plastic and packaging waste 12	12
Sorting plants for packaging waste, plastic treatment	
3. MRF (Material Recovery Facilities) 19	19
Sorting plants for dry valuable substances from domestic waste	
4. Refuse derived fuel (RDF)..... 25	25
Treatment plants for refuse derived fuel (SRF/RDF)	
5. Commercial and industrial waste (C+I), mixed building debris, bulky waste..... 32	32
Treatment plants for commercial and industrial waste, mixed building debris, bulky waste	
6. Waste paper treatment..... 37	37
Sorting plants for waste paper and cardboard	
7. Domestic waste, SRF/RDF before thermal treatment..... 40	40
Pre-sorting facilities before thermal treatment	
8. Slag and bottom ash from incineration..... 42	42
Bottom ash treatment	
9. Composting plants..... 46	46
10. Fermentation plants..... 57	57
11. Wood treatment plants 59	59
12. Conveying equipment..... 61	61



MECHANICAL-BIOLOGICAL WASTE TREATMENT (MBT) PLUS MUNICIPAL SOLID WASTE (MSW) TREATMENT



Municipal sorting waste plant Fredrikstad, Norway

Location	Fredrikstad, Norway
Plant	Mechanical waste treatment of MSW
Plant capacity	120,000 Mg/a
Commissioning	2025
Client	Østfold Avfallssortering, Fredrikstad, Norway

Waste management plant Olszowa, Poland

Location	Olszowa, Poland
Plant	Mechanical and biological waste treatment of MSW
Plant capacity	50,000 Mg/a
Commissioning	2022
Client	Zakład Zagospodarowania Odpadów Olszowa Sp. z o.o., Olszowa, Poland

Municipal sorting waste plant Stockholm, Sweden

Location	Stockholm, Sweden
Plant	Mechanical waste treatment of MSW
Plant capacity	140,000 Mg/a / 45 Mg/h
Commissioning	2020
Client	SÖRAP, Stockholm, Sweden

Waste management centre Bielsko-Biala, Poland

Location	Bielsko-Biała, Poland
Plant	Mechanical waste treatment of MSW
Plant capacity	75,000 Mg/a
Modernization	2019
Commissioning	2012
Client	Zakład Gospodarki Odpadami S.A., Bielsko-Biała, Poland

Waste management centre **Radom, Poland**

Location	Radom, Poland
Plant	Household waste treatment System Biofix
Plant capacity	Sorting plant: 210,000 Mg/a Composting plant: 42,000 Mg/a
Modernization	2019
Commissioning	2008
Client	PPUH RAdkom, Radom, Poland

Municipal sorting waste plant **Brześć Kujawski, Poland**

Location	Brześć Kujawski, Poland
Plant	Mechanical waste treatment of MSW
Plant capacity	60,000 Mg/a mixed MSW 5,000 – 6,000 Mg/a presorted waste
Modernization	2018
Client	Przedsiębiorstwo Gospodarki Odpadami, Kujawski, Poland

Municipal sorting waste plant **Kharkiv, Ukraine**

Location	Kharkiv, Ukraine
Plant	Procurement of construction on municipal solid waste, treatment facility including system of landfill gas collection and power generation
Plant capacity	80,000 Mg/a MSW 40,000 Mg/a presorted waste
Modernization	2018
Client	Utility Company “Kharkiv Municipal Company for Waste Management”, Kharkiv, Ukraine

Municipal sorting waste plant **Bydgoszcz, Poland**

Location	Bydgoszcz, Poland
Plant	Municipal solid waste treatment
Plant capacity	20 Mg/h presorted waste
Modernization	2018
Client	ProNatura, Bydgoszcz, Poland

Municipal sorting waste plant Stavanger, Norway

Location	Stavanger, Norway
Plant	Municipal solid waste treatment for receipt of recyclables
Plant capacity	40 Mg/h MSW 14 Mg/h Paper
Commissioning	2018
Client	IVAR, Stavanger, Norway

Waste management centre Krakow, Poland

Location	Krakow, Poland
Plant	Mechanical waste treatment of MSW
Plant capacity	55,000 Mg/a 9,000 Mg/a glas
Modernization	2018
Commissioning	2013
Client	Miejskie Przedsiębiorstwo Oczyszczania, Krakow, Poland

Waste management centre Kielce, Poland

Location	Promnik near Kielce, Poland
Plant	Municipal solid waste treatment Composting System Biofix
Plant capacity	Sorting plant: 29 Mg/h, 100,000 Mg/a Composting plant: 25,000 Mg/a
Commissioning	2016
Client	Przedsiębiorstwo Gospodarki Odpadami Kielce, Poland

Waste management centre Gać, Poland

Location	Gać, Poland
Plant	Mechanical waste treatment of MSW
Plant capacity	60,000 Mg/a
Commissioning	2003, 2010 and 2015
Client	Zakład Gospodarowania Odpadami Gać, Poland

Waste management centre Tychy, Poland

Location	Tychy, Poland
Plant	Municipal solid waste treatment
Plant capacity	Sorting plant: 22 Mg/h, 78,000 Mg/a
Commissioning	2014
Client	Master-Waste and Energia Tychy, Poland

Waste management centre Tczew, Poland

Location	Tczew, Poland
Plant	Household waste treatment Composting System Biofix
Plant capacity	Sorting plant: 75,000 Mg/a Composting plant: 35,000 Mg/a
Commissioning	2013
Client	Zakład Utylizacji Odpadów Stałych Tczew, Poland

Waste management centre Ostroda, Poland

Location	Rudno near Ostróda, Poland
Plant	Household waste treatment Composting System Biodegma
Plant capacity	Sorting plant: 65,000 Mg/a Composting plant: 27,000 Mg/a
Commissioning	2013
Client	Zakład Odpadów Komunalnych Rudno, Rudno, Poland

Waste management centre Elbląg, Poland

Location	Elbląg, Poland
Plant	Household waste treatment Composting System Biodegma
Plant capacity	Sorting plant: 75,000 Mg/a Composting plant: 28,000 Mg/a
Commissioning	2012
Client	Zakład Utylizacji Odpadów, Elbląg, Poland

Sorting plant **Baku, Azerbaijan**

Location	Baku, Azerbaijan
Plant	Sorting plant for MSW
Plant capacity	80,000 Mg/a
Commissioning	2012
Client	Adelmann, Karlstadt, Germany

Waste management centre **Sosnowiec, Poland**

Location	Sosnowiec, Poland
Plant	Household waste treatment
Plant capacity	Sorting plant: 70,000 Mg/a Composting plant: 13,000 Mg/a
Commissioning	2012
Client	Skladowania Odpadow, Sosnowiec, Poland

Waste management centre **Rudno, Poland**

Location	Rudno, Poland
Plant	Household waste treatment
Plant capacity	Sorting plant: 60,000 Mg/a Composting plant: 27,000 Mg/a
Commissioning	2012
Client	Komunalnych Rudno, Rudno, Poland

Waste management centre **Bialystok, Poland**

Location	Studzianki near Białystok, Poland
Plant	Mechanical waste treatment of MSW
Plant capacity	100,000 Mg/a
Commissioning	2011
Client	P.P.U.H. Czyściochin Białystok, Poland

Pre-treatment plant Linz, Austria

Location	Linz, Austria
Plant	Mechanical treatment of residuals of MBT, industrial waste, household waste waste before thermal treatment
Plant capacity	225,000 Mg/a
Commissioning	2011
Client	Linz Strom, Austria

Waste management centre Elk, Poland

Location	Siedliska near Elk, Poland
Plant	Household waste treatment Composting System Biofix Sorting plant: 35,000 Mg/a Composting plant: 21,000 Mg/a
Plant capacity	24.5 Mg/h
Commissioning	2010
Client	Przedsiębiorstwo Gospodarki Odpadami "EKO-Mazury" in Siedliska, Elk, Poland

Waste management centre Warsaw, Poland

Location	Warsaw, Poland
Plant	Mechanical waste treatment of MSW
Plant capacity	225,000 Mg/a (per 3 shifts)
Commissioning	2010
Client	Byś-Wojciech Byśkiniewicz, Warszawa, Poland

Waste management centre Kalisz, Poland

Location	Orli Staw near Kalisz, Poland
Plant	Household waste treatment System Biofix
Plant capacity	Composting plant: 80,000 Mg/a
Commissioning	2006
Client	Związek Komunalny Gmin "Czyste Miasto, Czysta Gmina", Kalisz, Poland

Waste management centre Großefehn, Germany

Location	Großefehn, Lower Saxony, Germany
Plant	Household, industrial and bulky waste
Plant capacity	30 Mg/h
Commissioning	2005
Client	Heilit Umwelttechnik, Düsseldorf, Germany

AEZ Erbenschwang, Germany

Location	Erbenschwang, Bavaria, Germany
Plant	Mechanical Treatment of Residual waste System Biofix
Plant capacity	40,000 Mg/a
Commissioning	First commissioning 1997, modification 2005
Client	Erbenschwanger Verwertungs- und Abfallentsorgungs-Gesellschaft, Schongau, Germany

Mechanical-biological waste treatment plant Neuss, Germany

Location	Neuss, North Rhine-Westphalia, Germany
Plant	MBT
Plant capacity	206,000 Mg/a
Commissioning	2001
Client	EGN, Grevenbroich, Germany

Waste management centre Singhofen, Germany

Location	Singhofen, Rhineland-Palatinate, Germany
Plant	Mechanical and biological waste treatment
Plant capacity	45 Mg/h
Commissioning	2000
Client	Rhein-Lahn-Kreis Abfallwirtschaft, Bad Ems, Germany

Waste management centre Bassum, Germany

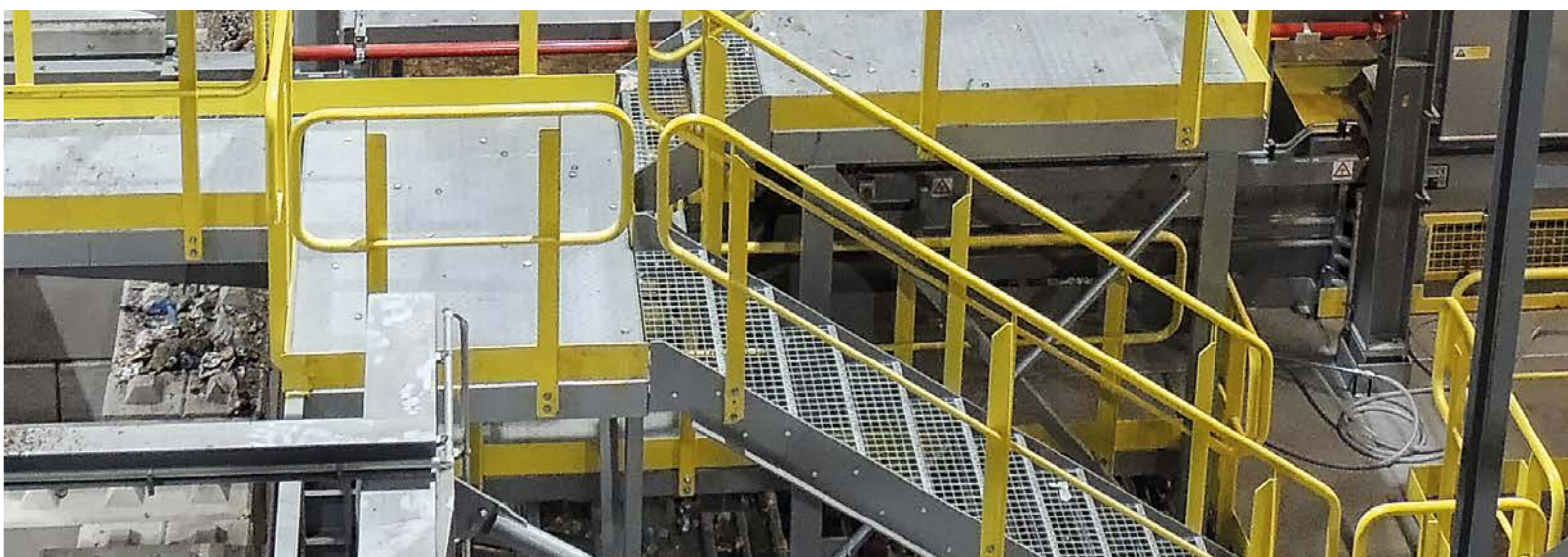
Location	Bassum, Lower Saxony, Germany
Plant	Mechanical and biological waste treatment
Plant capacity	60,000 Mg/a
Commissioning	1997
Client	Sotec, Saarbrücken, Germany

Waste management centre Düren, Germany

Location	Düren-Horm, North Rhine-Westphalia, Germany
Plant	Mechanical and biological waste treatment
Plant capacity	180,000 Mg/a
Commissioning	1995
Client	Dürener Deponiegesellschaft (DDG), Düren, Germany



PLASTIC AND PACKAGING WASTE SORTING PLANTS FOR PACKAGING WASTE, PLASTIC TREATMENT



Sorting plant for plastics **Krefeld, Germany**

Location	Krefeld, Germany
Plant	Sorting of packaging waste from MSW
Capacity	8.5 Mg/h
Commissioning	2025
Client	EGN Entsorgungsgesellschaft Niederrhein, Viersen, Germany

LWP-Sorting plant **Enns, Austria**

Location	Enns, Austria
Plant	Sorting plant for light weight packaging (LWP)
Capacity	100,000 Mg/a
Commissioning	2024
Client	Bernegger / ARA / Grüner Punkt, Enns, Austria

LWP-Sorting plant **Oslo, Norway**

Location	Oslo, Norway
Plant	Sorting plant for MSW / plastics
Capacity	20 Mg/h
Commissioning	2024
Client	Plastretur, Oslo, Norway

Sorting plant for plastics **Bochum, Germany**

Location	Bochum, Germany
Plant	Sorting plant for plastics
Capacity	6 Mg/h
Commissioning	2023
Client	RE Plano GmbH, Lünen, Germany

Plastic Recycling Facility **Site Zero, Motala, Sweden**

Location	Motala, Sweden
Plant	Second plant in Motala, sorting plant for packaging waste, 12 different output fractions
Plant capacity	200,000 Mg/a (together with the first plant)
Commissioning	2023 (first plant 2019)
Client	Svensk Plaståtervinning, Motala, Sweden

LWP-Sorting plant Vechta, Germany

Location	Vechta, Germany
Plant	Film sorting in various fractions
Plant capacity	7 Mg/h, 3-shift operation
Commissioning	2021
Client	SL Recycling, Vechta, Germany

PDM Sorting Zwolle, The Netherlands

Location	Zwolle, The Netherlands
Plant	PDM Sorting
Plant capacity	110,000 Mg/a
Commissioning	2019
Client	PreZero Wertstoffmanagement Porta Westfalica, Germany

Modification LWP-Sorting plant Oppin, Germany

Location	Oppin, Saxony-Anhalt, Germany
Plant	Sorting plant for light weight packaging (LWP)
Plant capacity	15 Mg/h
Modernisation	2019
Commissioning	2008
Client	Tönsmeier Service, Porta Westfalica, Germany

Treatment plant for plastics from refrigerators Lünen, Germany

Location	Lünen, North Rhine-Westphalia, Germany
Plant	Treatment plant for plastics from refrigerators
Plant capacity	3 Mg/h
Commissioning	2018
Client	RePlano, Lünen, Germany

LWP-Sorting plant Swisttal, Germany

Location	Swisttal, North Rhine-Westphalia, Germany
Plant	Sorting plant for light weight packaging (LWP)
Plant capacity	21 Mg/h
Commissioning	2018
Client	Hündgen Entsorgungs, Swisttal, Germany

Sorting plant for light weight packaging Gernsheim, Germany

Location	Gernsheim, Hesse, Germany
Plant	Sorting plant for light weight packaging (LWP)
Plant capacity	22 Mg/h
Commissioning	2018
Client	Meilo, Gernsheim, Germany

Automatic sorting plant, Singapore

Location	Singapore
Plant	Sorting plant for light weight packaging (LWP)
Plant capacity	10 Mg/h
Commissioning	2014
Client	Colex, Singapore

Automatic sorting plant Iserlohn, Germany

Location	Iserlohn, North Rhine-Westphalia, Germany
Plant	Sorting plant for light weight packaging (LWP)
Plant capacity	18 Mg/h
Commissioning	2014
Client	Lobbe, Iserlohn, Germany

Automatic sorting plant Bochum, Germany

Location	Bochum, North Rhine-Westphalia, Germany
Plant	Sorting plant for light weight packaging (LWP)
Plant capacity	12 Mg/h
Commissioning	2010
Client	Remondis, Lünen, Germany

Automatic sorting plant Soltau, Germany

Location	Soltau, Lower Saxony, Germany
Plant	Sorting plant for light weight packaging (LWP)
Plant capacity	8 Mg/h
Commissioning	2007
Client	Abfallbeseitigung H.Cohrs, Soltau, Germany

Automatic sorting plant Würzburg, Germany

Location	Würzburg, Bavaria, Germany
Plant	Sorting plant for light weight packaging (LWP)
Plant capacity	7 Mg/h
Commissioning	2007
Client	Würzburger Recycling, Germany

Modification sorting plant Detmold, Germany

Location	Detmold, North Rhine-Westphalia, Germany
Plant	Sorting plant for light weight packaging (LWP)
Plant capacity	8 Mg/h
Commissioning	2006
Client	DST-Wertstoffsartierung & Recycling Detmold, Germany

Automatic sorting plant Karditsa, Greece

Location	Karditsa, Greece
Plant	Sorting plant for commingled waste
Plant capacity	5 Mg/h
Commissioning	2005
Client	HE.R.R.Co., Kifissia, Greece

Modification sorting plant Herne, Germany

Location	Herne, North Rhine-Westphalia, Germany
Plant	Sorting plant for light weight packaging (LWP)
Plant capacity	12 Mg/h
Commissioning	2005
Client	Veolia, Herne, Germany

Modification automatic sorting plant Breinermoor, Germany

Location	Breinermoor, Lower Saxony, Germany
Plant	Sorting plant for light weight packaging (LWP)
Plant capacity	9 Mg/h
Commissioning	2005
Client	GMA, Wangerland, Germany

Modification automatic sorting plant Troisdorf, Germany

Location	Troisdorf, North Rhine-Westphalia, Germany
Plant	Sorting plant for light weight packaging (LWP)
Plant capacity	8 Mg/h
Commissioning	2002
Client	Remondis, Lünen, Germany

Modification automatic sorting plant Essen, Germany

Location	Essen, North Rhine-Westphalia, Germany
Plant	Sorting plant for light weight packaging
Plant capacity	7 Mg/h
Commissioning	2001
Client	Remondis, Lünen, Germany

Automatic sorting plant Cologne-Rodenkirchen, Germany

Location	Cologne-Rodenkirchen, North Rhine-Westphalia, Germany
Plant	Sorting plant for light weight packaging
Plant capacity	4 Mg/h
Commissioning	2001
Client	Remondis, Lünen, Germany

Sorting plant Backnang, Germany

Location	Backnang, Baden-Wuerttemberg, Germany
Plant	Sorting plant for light weight packaging
Plant capacity	3 Mg/h
Commissioning	1999
Client	Veolia, Filderstadt, Germany

Sorting plant **Speyerdorf, Germany**

Location	Speyerdorf, Baden-Wuerttemberg, Germany
Plant	Sorting plant for light weight packaging
Plant capacity	3 Mg/h
Commissioning	1999
Client	Veolia, Filderstadt, Germany

Sorting plant **Achern, Germany**

Location	Achern, Baden-Wuerttemberg, Germany
Plant	Sorting plant for light weight packaging (LWP)
Plant capacity	4 Mg/h
Commissioning	1998
Client	Mittelbadische Entsorgungs- und Recyclingbetriebe, Bietigheim, Germany



MRF (MATERIAL RECOVERY FACILITIES)

**SORTING PLANTS FOR DRY VALUABLE
SUBSTANCES FROM DOMESTIC WASTE**



Treatment plant for MSW Hamburg, Germany

Location	Hamburg, Germany
Plant	MWS treatment plant for the collection of recyclable materials
Capacity	145,000 Mg/a, 33 Mg/h
Commissioning	2026
Client	Stadtreinigung Hamburg, Germany

MRF Tuas, Singapore

Location	Tuas, Singapore
Plant	Sorting plant for recyclable materials before incineration
Capacity	77,500 Mg/a
Commissioning	2026
Client	ST Engineering Marine Ltd., Singapore

Sorting plant for MSW and dry valuable substances Altens East, Scotland

Location	Aberdeen, Scotland
Plant	Sorting plant for MSW and dry valuable substances
Capacity	33,000 Mg/a
Commissioning	2025
Client	Suez Recycling and Recovery UK, Berkshire, United Kingdom

Sorting plant for MSW and dry valuable substances Santiago de Chile, Chile

Location	Santiago de Chile, Chile
Plant	Sorting plant for MSW and dry valuable substances
Capacity	30,000 Mg/a, 7 Mg/h (two-shift-operation)
Commissioning	2023
Client	Ambipar, Santiago de Chile, Chile

MRF Porto, Portugal

Location	Porto, Portugal
Plant	Sorting of recyclable materials from packaging waste
Capacity	35,000 Mg/a, 8 Mg/h
Commissioning	2023
Client	Lipor, Baguim do Monte, Spain

Modification Bockenberg, Germany

Location	Bockenberg, North Rhine-Westphalia, Germany
Plant	Sorting plant for recyclables
Plant capacity	16 Mg/h
Commissioning	2019
Client	AVEA, Leverkusen, Germany

MRF Southwark, London, United Kingdom

Location	Southwark, London, United Kingdom
Plant	Mechanical waste treatment
Plant capacity	25 Mg/h
Commissioning	2012
Client	Veolia, United Kingdom

MRF West-Berkshire, United Kingdom

Location	Berkshire, United Kingdom
Plant	Mechanical waste treatment
Plant capacity	15 Mg/h
Commissioning	2011
Client	Veolia, United Kingdom

MRF Swanley, United Kingdom

Location	Swanley, United Kingdom
Plant	Mechanical waste treatment
Plant capacity	15 Mg/h
Commissioning	2011
Client	Ideal Waste, United Kingdom

MRF Mansfield, United Kingdom

Location	Mansfield, United Kingdom
Plant	Mechanical waste treatment
Plant capacity	25 Mg/h
Commissioning	2009
Client	Veolia, United Kingdom

MRF Newcastle, United Kingdom

Location	Newcastle, United Kingdom
Plant	Mechanical waste treatment
Plant capacity	15 Mg/h
Commissioning	2009
Client	Sita UK, United Kingdom

MRF Rainham, United Kingdom

Location	Rainham, United Kingdom
Plant	upgrade, glass treatment added
Plant capacity	22 Mg/h
Commissioning	2009
Client	Veolia, United Kingdom

MRF Brighton, United Kingdom

Location	Brighton, United Kingdom
Plant	Mechanical waste treatment
Plant capacity	15 Mg/h
Commissioning	2008
Client	Veolia, United Kingdom

MRF Caythorpe, United Kingdom

Location	Caythorpe, United Kingdom
Plant	Mechanical waste treatment
Plant capacity	15 Mg/h
Commissioning	2008
Client	MID UK, United Kingdom

MRF Reading, United Kingdom

Location	Reading, United Kingdom
Plant	Mechanical waste treatment
Plant capacity	15 Mg/h
Commissioning	2008
Client	AECOM/RE3, United Kingdom

Autoclave Rotherham, United Kingdom

Location	Rotherham, United Kingdom
Plant	Mechanical waste treatment
Plant capacity	80,000 Mg/a
Commissioning	2008
Client	Sterecycle, United Kingdom

MRF Alton, United Kingdom

Location	Alton, United Kingdom
Plant	Mechanical waste treatment
Plant capacity	24 Mg/h
Commissioning	2004
Client	Veolia, United Kingdom

MRF Greenwich, United Kingdom

Location	Greenwich, United Kingdom
Plant	Mechanical waste treatment
Plant capacity	50,000 Mg/a
Commissioning	2004
Client	Veolia, United Kingdom

MRF Grundon, United Kingdom

Location	Grundon, United Kingdom
Plant	Mechanical waste treatment
Plant capacity	14 Mg/h
Commissioning	2003
Client	Grundon Waste Management, United Kingdom

REFERENCES

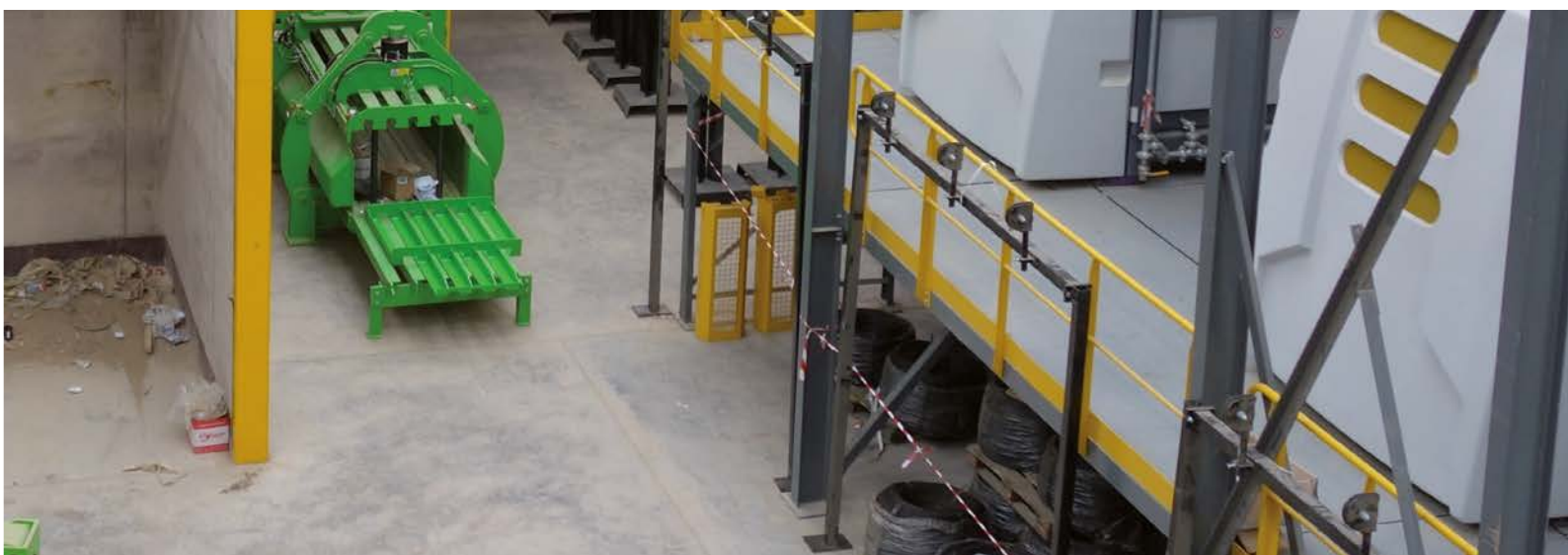
MRF Rainham, United Kingdom

Location	Rainham, United Kingdom
Plant	Mechanical waste treatment
Plant capacity	50,000 Mg/a
Commissioning	2001
Client	Veolia, Brentwood, United Kingdom



REFUSE DERIVED FUEL (RDF)

TREATMENT PLANTS FOR REFUSE DERIVED FUEL (SRF/RDF)



Commercial waste treatment plant Hannover, Germany

Location	Hannover, Germany
Plant	Commercial treatment plant for the production of SRF
Plant capacity	24 Mg/h
Commissioning	2021
Client	Noris Entsorgung, Germany

Sorting plant for commercial waste & construction and demolition waste Hannover, Germany

Location	Hannover, Germany
Plant	Sorting plant for industrial waste and construction and demolition waste producing RDF
Plant capacity	30 Mg/h
Commissioning	2018
Client	Tönsmeier Entsorgung, Germany

Commercial waste treatment plant Rugby, United Kingdom

Location	Rugby, United Kingdom
Plant	Treatment plant for commercial and municipal solid waste for the production of SRF
Plant capacity	55 Mg/h commercial and domestic waste
Commissioning	2015
Client	Sita UK, United Kingdom

Commercial waste treatment plant Birmingham, United Kingdom

Location	Birmingham, United Kingdom
Plant	Commercial treatment plant for the production of SRF
Plant capacity	24 Mg/h industrial waste
Commissioning	2013
Client	Sita UK, United Kingdom

Sorting plant for commercial waste & construction and demolition waste Helsinki, Finland

Location	Helsinki, Finland
Plant	Sorting plant for industrial waste and construction and demolition waste producing RDF
Plant capacity	25 Mg/h industrial waste 30 Mg/h construction demolition waste
Commissioning	2010
Client	Lassila Tikanoja, Finland

Commercial waste treatment plant Northampton, United Kingdom

Location	Northampton, United Kingdom
Plant	Production of RDF/SRF
Plant capacity	25 Mg/h
Commissioning	2009
Client	HW Martin, United Kingdom

Treatment plant for RDF Meppen, Germany

Location	Meppen, Lower Saxony, Germany
Plant	Production of RDF/SRF
Plant capacity	30 Mg/h
Commissioning	2006
Client	Augustin Städtereinigung, Meppen, Germany

Treatment plant for RDF Flörsheim, Germany

Location	Flörsheim, Hesse, Germany
Plant	Production of RDF/SRF
Plant capacity	13 Mg/h
Commissioning	2006
Client	Remondis, Lünen, Germany

Treatment plant for RDF Cologne, Germany

Location	Cologne, North Rhine-Westphalia, Germany
Plant	Production of RDF/SRF
Plant capacity	20 Mg/h
Commissioning	2006
Client	GVG, Cologne, Germany

Treatment plant for RDF Wels, Austria

Location	Wels, Austria
Plant	Production of RDF/SRF
Plant capacity	18 Mg/h
Commissioning	2006
Client	Energie AG Wels, Austria

Treatment plant for RDF Ihlenberg, Germany

Location	Ihlenberg, Mecklenburg-Western Pomerania, Germany
Plant	Production of RDF/SRF
Plant capacity	25 Mg/h
Commissioning	2006
Client	RABA Ihlenberg, Selmsdorf, Germany

Treatment plant for RDF Halle-Lochau, Germany

Location	Lochau, Lower Saxony, Germany
Plant	Production of RDF/SRF
Plant capacity	20 Mg/h
Commissioning	2006
Client	Fehr Umwelt, Döllnitz, Germany

Treatment plant for RDF Ennigerloh, Germany

Location	Ennigerloh, North Rhine-Westphalia, Germany
Plant	Production of RDF/SRF
Plant capacity	24 Mg/h
Commissioning	2006
Client	EKOWEST, Ennigerloh, Germany

Treatment plant for RDF Meschede, Germany

Location	Meschede, North Rhine-Westphalia, Germany
Plant	Production of RDF/SRF
Plant capacity	30 Mg/h
Commissioning	2005
Client	Remondis, Lünen, Germany

Treatment plant for RDF Neuss, Germany

Location	Neuss, North Rhine-Westphalia, Germany
Plant	Production of RDF/SRF
Plant capacity	30 Mg/h
Commissioning	2005
Client	EGN, Grevenbroich, Germany

Treatment plant for RDF Bochum, Germany

Location	Bochum, North Rhine-Westphalia, Germany
Plant	Production of RDF/SRF
Plant capacity	30 Mg/h
Commissioning	2005
Client	Weber, Bochum, Germany

Treatment plant for RDF Kerpen, Germany

Location	Kerpen, North Rhine-Westphalia, Germany
Plant	Production of RDF/SRF
Plant capacity	20 Mg/h
Commissioning	2005
Client	Schönmackers, Kerpen, Germany

Treatment plant for RDF Asdonkshof, Germany

Location	Kamp Lintfort, North Rhine-Westphalia, Germany
Plant	Production of RDF/SRF
Plant capacity	20 Mg/h
Commissioning	2005
Client	KWA, Kreis Wesel, Kamp Lintfort, Germany

Treatment plant for RDF Wiefels, Germany

Location	Wiefels, Lower Saxony, Germany
Plant	Production of RDF/SRF
Plant capacity	20 Mg/h
Commissioning	2004
Client	GMA, Wangerland, Germany

Treatment plant for RDF Winschoten, The Netherlands

Location	Winschoten, The Netherlands
Plant	Production of RDF/SRF
Plant capacity	15 Mg/h
Commissioning	2002
Client	AlBra Winschoten bv, Winschoten, The Netherlands

Treatment plant for RDF Delitzsch, Germany

Location	Delitzsch, Saxony, Germany
Plant	Production of RDF/SRF
Plant capacity	50,000 Mg/a
Commissioning	2000
Client	Kreiswerke Delitzsch, Delitzsch, Germany
2002 fire damage:	New installation and plant extension
Plant capacity	60,000 Mg/a
Commissioning	2002

Treatment plant for RDF Akea, Germany

Location	Erftstadt, North Rhine-Westphalia, Germany
Plant	Production of RDF/SRF
Plant capacity	45,000 Mg/a (one-shift-operation)
Commissioning	1998
Client	Remondis, Lünen, Germany

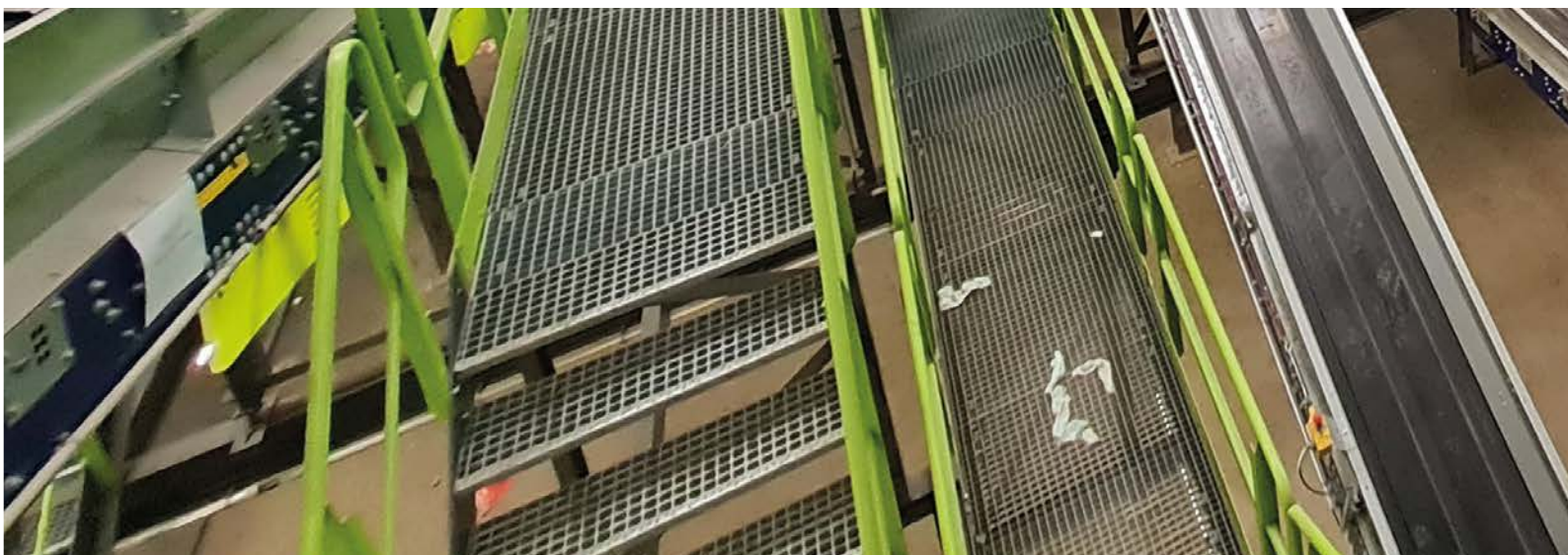
Production of Pellets as RDF Krefeld, Germany

Location	Krefeld, North Rhine-Westphalia, Germany
Plant	Production of pellets as RDF
Plant capacity	13,000 Mg/a (one-shift-operation)
Commissioning	1995
Client	Remondis, Krefeld, Germany



**COMMERCIAL AND INDUSTRIAL WASTE (C+I),
MIXED BUILDING DEBRIS, BULKY WASTE**

**TREATMENT PLANTS FOR COMMERCIAL AND INDUSTRIAL
WASTE, MIXED BUILDING DEBRIS, BULKY WASTE**



Sorting plant for commercial and industrial waste, **Gent, Belgium**

Location	Gent, Belgium
Plant	Commercial and industrial waste for the recovery of recyclable materials
Plant capacity	65.000 Mg/a
Commissioning	2021
Client	Suez R&R BE Services, Belgium

Sorting plant **Troisdorf, Germany**

Location	Troisdorf, North Rhine-Westphalia, Germany
Plant	Sorting plant for industrial waste refuse
Plant capacity	20 Mg/h
Commissioning	2019
Client	Remondis, Germany

Sorting plant **Eichenzell, Germany**

Location	Eichenzell, Hesse, Germany
Plant	Sorting plant for industrial waste refuse
Plant capacity	22 Mg/h
Commissioning	2019
Client	Veolia Umweltservice West, Eichenzell, Germany

Sorting plant **Hannover, Germany**

Location	Hannover, Lower Saxony, Germany
Plant	Sorting plant for industrial waste refuse
Plant capacity	80,000 Mg/a
Commissioning	2018
Client	Tönsmeier Entsorgung, Germany

Sorting plant **Ahrental, Austria**

Location	Ahrental, Austria
Plant	Sorting plant for industrial, domestic and bulky waste
Plant capacity	40 Mg/h
Commissioning	2010
Client	Arge Ahrental Fröschl Alpine, Austria

Sorting plant Helsinki, Finland

Location	Helsinki, Finland
Plant	Sorting plant for industrial waste refuse and construction demolition waste
Plant capacity	25 Mg/h industrial waste 30 Mg/h construction demolition waste
Commissioning	2010
Client	Lassila Tikanoja, Finland

Commercial waste treatment plant Northampton, United Kingdom

Location	Northampton, United Kingdom
Plant	Production of RDF/SRF
Plant capacity	25 Mg/h
Commissioning	2009
Client	HW Martin Ud, United Kingdom

Sorting plant Ennigerloh, Germany

Location	Ennigerloh, Germany,
	Germany
Plant	Sorting plant for industrial waste, and household waste
Plant capacity	26 Mg/h household waste 26 Mg/h industrial waste
Commissioning	2008
Client	AWG, Warendorf, Germany

Sorting plant Luton, United Kingdom

Location	Luton, United Kingdom
Plant	Sorting plant for industrial waste refuse
Plant capacity	30 Mg/h
Commissioning	2008
Client	Cawley, United Kingdom

Sorting plant **Bitburg, Germany**

Location	Bitburg, Rhineland Palatinate, Germany
Plant	Sorting plant for construction waste, industrial waste and bulky refuse
Plant capacity	15 Mg/h
Commissioning	2006
Client	BRG Umweltpark Bitburg, Germany

Sorting plant **GVG, Germany**

Location	Cologne, North Rhine-Westphalia, Germany
Plant	Sorting plant for industrial waste
Plant capacity	40 Mg/h
Commissioning	2006
Client	GVG Cologne, Germany

BMA Gernsheim, Germany

Location	Gernsheim, Bavaria, Germany
Plant	Sorting plant for construction waste, industrial waste and bulky refuse
Plant capacity	90,000 Mg/a
Commissioning	1996
Client	Waibel KG, Gernsheim, Germany

Sorting plant **BAV, Germany**

Location	Cologne Rath-Heumar, North Rhine-Westphalia, Germany
Plant	Sorting plant for construction waste, industrial waste and bulky refuse
Plant capacity	45 Mg/h
Commissioning	1994
Client	Remondis, Viersen, Germany

REFERENCES

Construction waste treatment plant Neandertal, Germany

Location	Mettmann, North Rhine-Westphalia, Germany
Plant	Sorting plant for construction waste
Plant capacity	45 Mg/h
Commissioning	1994
Client	R+R Rohstoffrückgewinnung und Recycling, Mettmann, Germany



WASTE PAPER TREATMENT

SORTING PLANTS FOR WASTE PAPER AND CARDBOARD



Paper sorting plant Bern, Switzerland

Location	Bern, Switzerland
Plant	Sorting plant for paper
Plant capacity	14 Mg/h
Commissioning	2017
Client	Alpabern AG, Switzerland

Paper sorting plant Dachau, Germany

Location	Dachau, Bavaria, Germany
Plant	Sorting plant for paper
Plant capacity	24 Mg/h two lines
Commissioning	2008
Client	ASO, Dachau, Germany

Paper sorting plant Zorneding, Germany

Location	Zorneding, Bavaria, Germany
Plant	Sorting plant for paper from households
Plant capacity	12 Mg/h
Commissioning	2007
Client	Ammer, Zorneding, Germany

Paper sorting plant Schwedt, Germany

Location	Schwedt, Brandenburg, Germany
Plant	Sorting plant for paper from households
Plant capacity	20 Mg/h
Commissioning	2004
Client	MAD, Munich, Germany

Automatic paper sorting plant Sheffield, United Kingdom

Location	Sheffield, United Kingdom
Plant	Automatic paper sorting plant
Plant capacity	14 Mg/h
Commissioning	2003
Client	Onyx, United Kingdom

Automatic paper sorting plant Cologne-Merkenich, Germany

Location	Cologne-Merkenich, North Rhine-Westphalia, Germany
Plant	Automatic paper sorting plant
Plant capacity	14.5 Mg/h
Commissioning	2001
Client	Remondis, Lünen, Germany

Sorting plant Nützen, Germany

Location	Nützen, Lower Saxony, Germany
Plant	Sorting plant for paper, cardboard and paper board
Plant capacity	12 Mg/h
Commissioning	1999
Client	Brockmann, Nützen, Germany

Sorting plant Hamburg, Germany

Location	Hamburg, Germany
Plant	Sorting plant for paper, cardboard and paper board
Plant capacity	13 Mg/h
Commissioning	1999
Client	Veolia, Hamburg, Germany



DOMESTIC WASTE, SRF/RDF BEFORE THERMAL TREATMENT

PRE-SORTING FACILITIES BEFORE THERMAL TREATMENT



Treatment before Gasification, Hull, United Kingdom

Location	Hull, United Kingdom
Plant	Treatment before Gasification, Mechanical treatment of RDF, sort out of impurities
Plant capacity	278,000 Mg/a
Commissioning	2018
Client	M+W Group, United Kingdom

Pre-treatment plant Solucom, Luxembourg

Location	Leudelinge, Luxembourg
Plant	Mechanical pre-treatment of domestic waste before thermal treatment
Plant capacity	20,000 Mg/a
Commissioning	2001
Client	Solucom, Luxembourg

Pre-treatment plant Cologne-Niehl, Germany

Location	Cologne-Niehl, North Rhine-Westphalia, Germany
Plant	Mechanical pre-treatment of domestic waste before thermal treatment
Plant capacity	660,000 Mg/a
Commissioning, modification and extension	1996 until 2000
Client	AVG Abfallentsorgungs- und Verwertungs- Gesellschaft Köln, Cologne, Germany

Pre-treatment plant Leverkusen, Germany

Location	Leverkusen, North Rhine-Westphalia, Germany
Plant	Mechanical pre-treatment of domestic waste before thermal treatment
Plant capacity	38,500 Mg/a
Commissioning	1994
Client	AWL Abfallwirtschaftsgesellschaft, Leverkusen, Germany



SLAG AND BOTTOM ASH FROM INCINERATION BOTTOM ASH TREATMENT



Slag treatment plant **Gelsenkirchen, Germany**

Location	Zentraldeponie Emscherbruch, Germany
Plant	Bottom ash treatment
Plant capacity	150 Mg/h
Modification	2021 (extension of the processing line)
Commissioning	2011
Client	AGR, Germany

Slag treatment plant **Poznan, Poland**

Location	Poznan, Poland
Plant	Bottom ash treatment
Plant capacity	40 Mg/h
Commissioning	2016
Client	Hitachi Zosen Inova, Switzerland

Slag treatment plant **Mannheim, Germany**

Location	Mannheim, Germany
Plant	Mobile slag treatment
Plant capacity	0-8 mm = 55 Mg/h 8-75 mm = 40 Mg/h
Commissioning	2009
Client	Remex, Germany

Slag treatment plant **Halle, Germany**

Location	Halle, Saxony Anhalt, Germany
Plant	Slag treatment with extraction of reusable materials and preparation of slag as construction material
Plant capacity	120 Mg/h
Commissioning	2005
Client	Baumann & Burmeister (Strabag), Germany

Slag treatment plant Illingen, Germany

Location	Illingen, Saarland, Germany
Plant	Slag treatment with extraction of reusable materials and preparation of slag as construction material
Plant capacity	180,000 Mg/a
Commissioning	1999
Client	Sotec, Saarbrücken, Germany

Slag treatment plant Weisweiler, Germany

Location	Weisweiler, North Rhine-Westphalia, Germany
Plant	Slag treatment with extraction of reusable materials and preparation of slag as construction material
Plant capacity	100,000 Mg/a
Commissioning	1999
Client	TRAWA, Aachen, Germany

Slag treatment plant Cologne-Niehl, Germany

Location	Cologne-Niehl, North Rhine-Westphalia, Germany
Plant	Slag treatment with extraction of reusable materials and preparation of slag as construction material
Plant capacity	130,000 Mg/a
Commissioning	1998
Client	AVG Abfallentsorgungs- und Verwertungsgesellschaft Köln, Cologne, Germany

REFERENCES

Slag treatment plant MVR Rugenberger Damm, Hamburg, Germany

Location	Hamburg, Germany
Plant	Slag treatment with extraction of reusable materials and preparation of slag as construction material
Plant capacity	50 Mg/h
Commissioning	1998
Client	MVR Müllverwertung Rugenberger Damm, Hamburg, Germany



COMPOSTING PLANTS



Composting plant **Bützberg, Germany**

Location	Bützberg, Germany
Plant	Windrow system Wendelin
Plant capacity	45,000 Mg/a
Commissioning	2027
Client	Stadtreinigung Hamburg, Germany

Composting plant **Neot Chovav, Israel**

Location	Neot Chovav, Israel
Plant	Stabilisation of MSW fraction < 80mm, System BIODEGMA
Plant capacity	60,000 Mg/a
Commissioning	Under construction
Client	Bar-Idan Tohar 2009, Israel

Composting plant **Ein HaShlosa, Israel**

Location	Ein HaShlosa, Israel
Plant	Stabilisation of MSW fraction < 80mm, System BIODEGMA
Plant capacity	50,000 Mg/a
Commissioning	Under construction
Client	Hayun Ecology Compost Industry, Israel

Composting plant **Oberschmon, Germany**

Location	Oberschmon, Germany
Plant	Composting of sewage sludge, System BIODEGMA
Plant capacity	30,000 Mg/a
Commissioning	2022
Client	Wiese Umwelt Service, Germany

Composting plant Obersontheim, Germany

Location	Obersontheim, Germany
Plant	Composting Plant, System BIODEGMA
Plant capacity	25,000 Mg/a
Commissioning	2020
Client	KGH Umweltservice, Germany

Waste management Hannover, Germany

Location	Hannover, Lower Saxony, Germany
Plant	Second windrow system Wendelin plus charging bridge
Plant capacity	40,000 Mg/a
Commissioning	2020
Client	AHA Hannover, Germany

Composting plant Działdowo, Poland

Location	Działdowo, Poland
Plant	Stabilisation of MSW fraction < 80mm, System BIODEGMA
Plant capacity	15,000 Mg/a
Commissioning	2019
Client	Ekologiczny Związek Gmin "Działdowszczyzna", Poland

Composting plant Rekowo, Poland

Location	Rekowo, Poland
Plant	Stabilisation of MSW fraction < 80mm, System BIODEGMA
Plant capacity	8,000 Mg/a
Commissioning	2019
Client	ZZO Sierzno, Rekowo, Poland

Composting plant **Kwidzyn, Poland**

Location	Kwidzyn, Poland
Plant	Stabilisation of MSW fraction < 80mm, System BIODEGMA
Plant capacity	12,000 Mg/a
Commissioning	2019
Client	Zakład Utylizacji Odpadów, Poland

Composting plant **Goch, Germany**

Location	Goch, North Rhine-Westphalia, Germany
Plant	Bio waste and green waste composting, System Biofix
Plant capacity	70,000 Mg/a
Upgrade	2019
Commissioning	1998
Client	Schönmackers Umweltdienste, Goch, Germany

Composting plant **Osnabrück, Germany**

Location	Osnabrück, Lower Saxony, Germany
Plant	Composting plant for the treatment of Organic and green waste, tunnel composting system
Plant capacity	122,000 Mg/a
Commissioning	2018
Client	Kompostierungsgesellschaft Region Osnabrück, Germany

Composting plant **Buchen, Germany**

Location	Buchen, Germany
Plant	Composting Plant for Green Waste, System BIODEGMA
Plant capacity	5,000 Mg/a
Commissioning	2017
Client	AWN Abfallwirtschaftsgesellschaft des Neckar- Odenwald-Kreises, Germany

Composting plant Wiesbaden, Germany

Location	Wiesbaden, Germany
Plant	Composting Plant for Green Waste, System BIODEGMA
Plant capacity	13,000 Mg/a
Commissioning	2017
Client	HK & G Service, Germany

Composting plant Dar es Salaam, Tanzania

Location	Dar es Salaam, Tanzania
Plant	Source separated organics - composting plant, System BIODEGMA
Plant capacity	55,000 Mg/a
Commissioning	2016
Client	Dr. Kölsch Geo- und Umwelttechnik, Germany

Waste management Hannover, Germany

Location	Hannover, Lower Saxony, Germany
Plant	Windrow system Wendelin
Plant capacity	40,000 Mg/a
Commissioning	2016
Client	AHA Hannover, Germany

Composting plant Varaždin, Croatia

Location	Varaždin, Croatia
Plant	Composting of sewage sludge, System BIODEGMA
Plant capacity	5,000 Mg/a
Commissioning	2015
Client	HIS D.O.O., Croatia

Composting plant **Słupsk, Poland**

Location	Słupsk, Poland
Plant	Stabilisation of MSW fraction < 80mm, System BIODEGMA
Plant capacity	13,000 Mg/a
Commissioning	2015
Client	PGK Słupsk-Baza, Poland

Composting plant **Kołobrzeg, Poland**

Location	Kołobrzeg, Poland
Plant	Stabilisation of MSW fraction < 80mm, System BIODEGMA
Plant capacity	16,000 Mg/a
Commissioning	2015
Client	MZZ Kołobrzeg, Poland

Composting plant **Wola Pawłowska, Poland**

Location	Wola Pawłowska, Poland
Plant	Stabilisation of MSW fraction < 80mm, System BIODEGMA
Plant capacity	20,500 Mg/a
Commissioning	2015
Client	PUK, Poland

Composting plant **Sosnowiec, Poland**

Location	Sosnowiec, Poland
Plant	Stabilisation of MSW fraction < 80mm, System BIODEGMA
Plant capacity	26,000 Mg/a
Commissioning	2015
Client	MZSO Sosnowiec, Poland

Composting plant Bolesław, Poland

Location	Bolesław, Poland
Plant	Stabilisation of MSW fraction < 80mm, System BIODEGMA
Plant capacity	21,000 Mg/a
Commissioning	2015
Client	ZGK Bolesław, Poland

Composting plant Rybnik, Poland

Location	Rybnik, Poland
Plant	Stabilisation of MSW fraction < 80mm, System BIODEGMA
Plant capacity	20,000 Mg/a
Commissioning	2015
Client	Sego, Poland

Waste management Linkenbach, Germany

Location	Neuwied, Kreis Neuwied, Germany
Plant	Tunnel composting
Plant capacity	39,000 Mg/a
Commissioning	2014
Client	Kreis Neuwied, Germany

Waste management Düsseldorf, Germany

Location	Düsseldorf, KDM, Germany
Plant	Presorting treatment before composting
Plant capacity	40 Mg/h
Commissioning	2013
Client	KDM, Düsseldorf, Germany

Composting plant Toscana, Italy

Location	Terranova Toscana, Italy
Plant	Bio waste and green waste composting System Biofix
Plant capacity	44,300 Mg/a
Commissioning	2007
Client	Unieco, Italy

Bio waste composting in combination with mechanical-biological waste treatment, Piedmont, Italy

Location	Piedmont, Italy
Plant	Mechanical and biological waste treatment System Biofix
Plant capacity	18,000 Mg/a
Commissioning	2004
Client	Unieco, Italy

Composting plant Schwegermoor, Germany

Location	Schwegermoor, Lower Saxony, Germany
Plant	Bio waste and green waste composting optimisation: Tunneled system procedure
Plant capacity	50,000 Mg/a
Commissioning	2003
Client	K.R.O., Schwegermoor, Germany

Composting plant Stavanger, Norway

Location	Stavanger, Norway
Plant	Bio waste and green waste composting System Biofix
Plant capacity	28,000 Mg/a
Commissioning	2000
Client	IVAR Interkommunalt Vann, Avlops-og Renovasjonsverk, Forus, Norway

Composting plant Contarina, Italy

Location	Spresiano (TV), Italy
Plant	Bio waste and green waste composting as well as biological waste treatment System Wendelin and Trimalin
Plant capacity	52,200 Mg/a
Commissioning	2000
Client	Lurgi Entsorgung, Ratingen, Germany

Composting plant Viersen, Germany

Location	Viersen, North Rhine-Westphalia, Germany
Plant	Bio waste and green waste composting System Biofix
Plant capacity	50,000 Mg/a
Commissioning	1998
Client	Reterra, Viersen, Germany

Composting plant Neuss-Korschenbroich, Germany

Location	Neuss-Korschenbroich, North Rhine- Westphalia, Germany
Plant	Bio waste and green waste composting System Kompoflex
Plant capacity	40,000 Mg/a
Commissioning	1998
Client	Reterra, Viersen, Germany

Composting plant Düsseldorf-Mettmann, Germany

Location	Ratingen, North Rhine-Westphalia, Germany
Plant	Bio waste and green waste composting System Biofix
Plant capacity	35,000 Mg/a
Commissioning	1997
Client	KDM – Kompostierungs- und Vermarktungsges. für Kreis Mettmann, Düsseldorf, Germany

Composting plant Cologne-Niehl, Germany

Location	Cologne-Niehl, North Rhine-Westphalia, Germany
Plant	Bio waste and green waste composting System Kompoflex
Plant capacity	42,000 Mg/a
Commissioning	1997
Client	AVG Abfallentsorgungs- und Verwertungs- Gesellschaft Köln, Cologne, Germany

Composting plant VZEK, Germany

Location	Erfstadt, North Rhine-Westphalia, Germany
Plant	Bio waste and green waste composting System Kompoflex
Plant capacity	54,000 Mg/a
Commissioning	1997
Client	Remondis, Erfstadt, Germany

Composting plant Bischofsheim, Germany

Location	Bischofsheim, Hesse, Germany
Plant	Bio waste and green waste composting, treatment
Plant capacity	30,000 Mg/a
Commissioning	1995
Client	Riedwerke, Groß Gerau, Germany

Composting plant Lochau, Germany

Location	Lochau, Saxony-Anhalt, Germany
Plant	Bio waste and green waste composting System Biofix
Plant capacity	6,500 Mg/a
Commissioning	1994
Client	Mitteldeutsche Umwelt- und Entsorgung, Braunsbedra, Germany

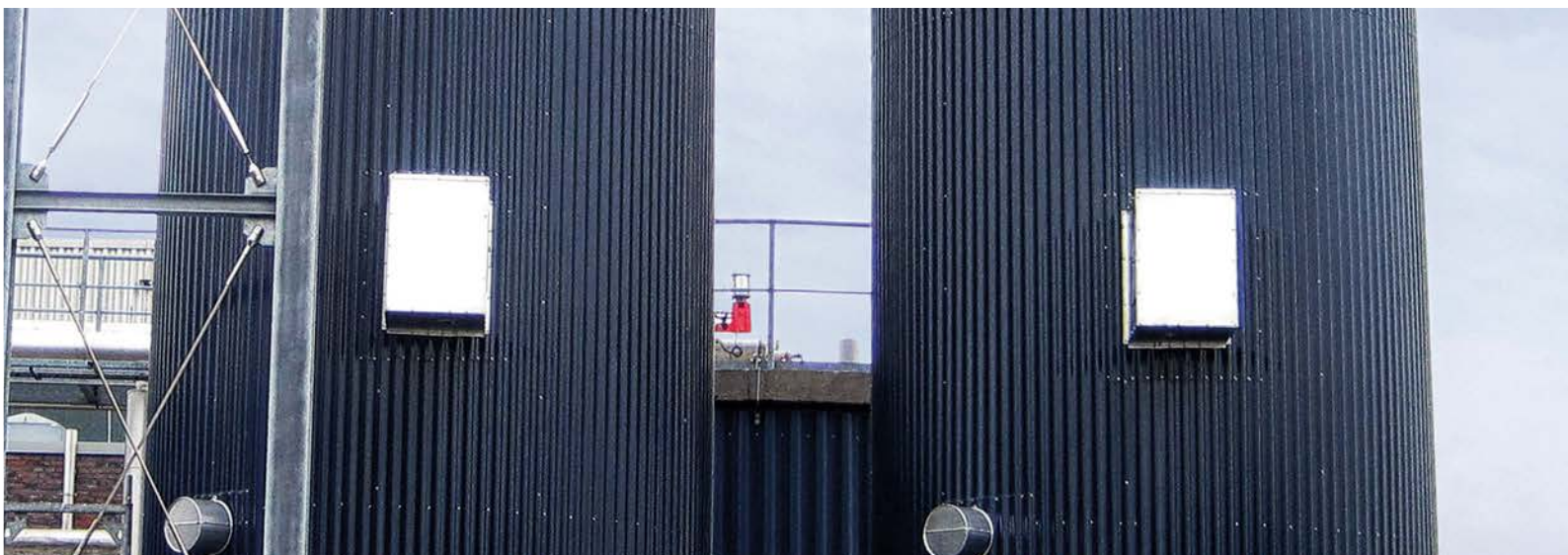
REFERENCES

Composting plant **Gut Müttinghoven, Germany**

Location	Swisttal-Morenhoven, North Rhine-Westphalia, Germany
Plant	Bio waste and green waste composting System Biofix
Plant capacity	12,000 Mg/a
Commissioning	1993
Client	KDM Reterra, Erftstadt, Germany



FERMENTATION PLANTS



Fermentation plant Erbenschwang, Germany

Location	Ingenried, Bavaria, Germany
Plant	Fermentation plant for residual waste
Plant capacity	60,000 Mg/a
Commissioning	2019
Client	Eva, Ingenried, Germany

Fermentation plant Gescher, Germany

Location	Gescher North Rhine-Westphalia, Germany
Plant	Fermentation plant
Plant capacity	60,000 Mg/a
Commissioning	2014
Client	EGW, Gescher, Germany

Fermentation plant Mülheim a.d.R., Germany

Location	Mülheim a.d.R., North Rhine-Westphalia, Germany
Plant	Fermentation plant for bio waste and food waste
Plant capacity	22,000 Mg/a
Commissioning	2004
Client	MEG Mülheimer Entsorgungsgesellschaft, Mülheim an der Ruhr, Germany



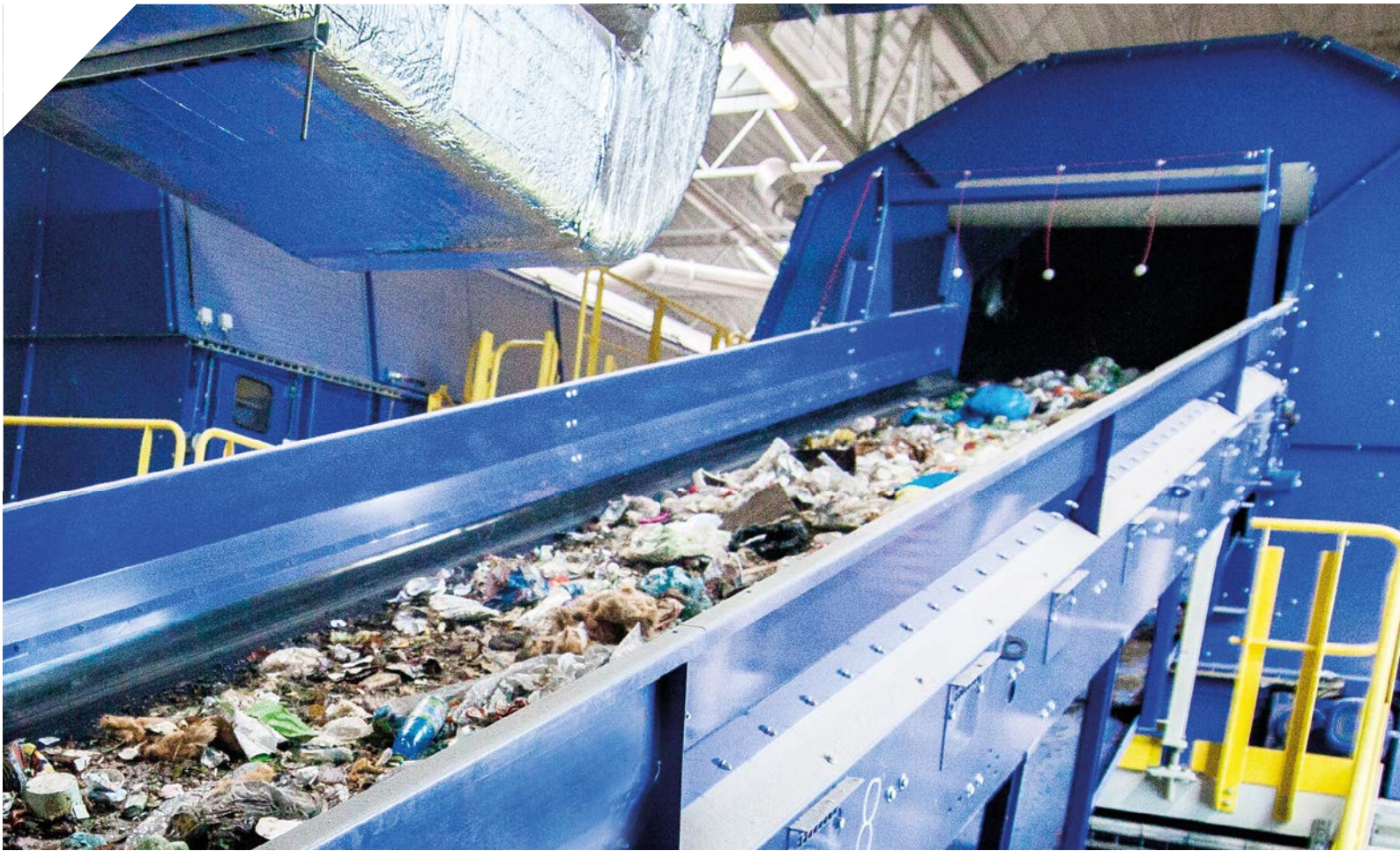
WOOD TREATMENT PLANTS



REFERENCES

Wood treatment plant Vossenack, Germany

Location	Düren, North Rhine-Westphalia, Germany
Plant	Treatment plant for the production of wood chips and pellets
Plant capacity	65,000 Mg/a
Commissioning	2007
Client	STAWAG, Aachen, Germany



CONVEYING EQUIPMENT



Different conveying equipment Amman, Jordan

Location	Amman, Jordan
Plant	Different conveying equipment
Plant capacity	2017
Client	Adelmann Umwelt, Karlstadt, Germany

Plant for data destruction Cologne, Germany

Location	Cologne, Germany
Plant	Conveying equipment and measuring units
Plant capacity	10 Mg/h
Commissioning	2007
Client	Bruckmann, Cologne, Germany

Plant for RDF in Austria

Location	Sankt Pantaleon, Austria
Plant	Conveying equipment and air separation
Plant capacity	8 Mg/h
Commissioning	2006
Client	Neuhauser, Austria

Plant for pre-treatment and crushing of bulky waste, Rotterdam, The Netherlands

Location	Rotterdam, The Netherlands
Plant	Conveying equipment
Plant capacity	50 Mg/h
Commissioning	2002
Client	Rentec, Pittem, Belgium for AVR, Rotterdam, The Netherlands

Gipswerke Lochau, Germany

Location	Lochau, Saxony-Anhalt, Germany
Plant	Conveying equipment
Plant capacity	380 Mg/h
Commissioning	1998
Client	Gipswerke Lochau, Döllnitz, Germany

OUR LOCATIONS WE GET THE BEST OUT

HEADQUARTERS

SUTCO[®] RECYCLINGTECHNIK GMBH

Britanniahütte 14
51469 Bergisch Gladbach
Germany

info@sutco.de

SUBSIDIARIES

SUTCO[®] POLSKA

Spółka z o.o., ul. Hutnicza 10
40-241 Katowice
Poland

info@sutco.pl

SUTCO[®] UK LTD.

Palmerston House
814 Brighton Road
Purley, Surrey CR8
United Kingdom

info@sutco-uk.com

SUTCO[®] IBÉRICA
RECYCLING TECHNOLOGY S.L.

Avda. Diagonal 463 BIS, 7º, 2ª
08036 Barcelona
Spain

info@sutco.es

SUTCO BRASIL LTDA.

Av. Ana Costa, nº 61, terreo, sala 22
Bairro Gonzaga,
CEP 11.060-001, Santos, SP
Brazil

info@sutco.com.br

SUTCO SINGAPORE PTE. LTD.

4 Battery Road # 25-01
Bank of China Building
Singapore, 049908
Singapore

info@sutco.de

SUTCO[®] SWEDEN AB

c/o Rödl & Partner Nordic AB
Jungmansgatan 12
211 11 Malmö
Sweden

info@sutco.de



WWW.SUTCO.COM

